

Ottawa County Community Foundation
Celebrating Our Tenth Year
Spring 2009 Newsletter



**DOING GOOD.
FOREVER**

The Ottawa County Community Foundation was established in 1999 as a **public** charitable organization created by the citizens of our community to improve the quality of life for those who live and work in the Ottawa County area. For the fourth consecutive year the foundation will be awarding grants in education, social services, health, natural resources, positive learning environment and the arts.

2009 ORGANIZATIONAL MEETING

The OCCF Board of Trustees held its organizational meeting on January 22 at the Ida Rupp Public Library in Port Clinton. Joy Roth was elected to continue as President with Dr. Derrill Hablitzel, Vice- President, Julie Quayle, Secretary and Neil Allen, Treasurer. Trustees re-elected to three-year terms were Neil Allen, Marcia Jess, David Martin, Jon James, Julie Quayle and Jack Schiller.

* The 2009 meeting calendar was adopted with the Board of Trustees meeting the fourth Thursday (third Thursday in November and December) of every other month rotating among Port Clinton, Oak Harbor and the Elmore/Genoa areas. The Executive Committee of the Board meets the alternate months at the Ida Rupp Library in Port Clinton.

* The Board continued to express its appreciation to the Port Clinton School District and Ida Rupp Library governance boards for their support and home office assistance.

* During 2009, OCCF will continue to seek contributions for the OCCF Operating Fund - the one fund upon which all other funds rely. The Operating Fund supports our day to day operations and communications with the citizens of Ottawa County.

WELCOME NEW BOARD MEMBER

Mary Coffee



Mary Coffee is a former kindergarten teacher who saw children struggling to read and became involved in tutoring children with dyslexia using the Orton-Gillingham method. She has also spent many years in the retail giftware business. Mary is a member of the Assoc. of Junior Leagues and the Presbyterian Church of Orchard Park. She also enjoys volunteering with the

Otterbein North Shore Retirement Community in Lakeside and with the United Way as a VITA volunteer. She lives in Oak Harbor and has three children.

TEN YEAR MILESTONES

1999 - Board of Trustees established in September with charter members Joy Roth, Dr. Derrill Hablitzel, Robert Armbruster, Tom Salamone, Ellen Bergman with Bart Anderson as Recording Secretary

2000 - Earl Johnson, John Blatt, Darrell Opfer, Jack Schiller and David Martin added to the Board

2000 - Informational breakfast meetings were held for Professional Advisors

2001 - *Establishing Your Fund* brochure was printed and distributed

2001 - Initial operating funds provided through the Stensen and Heigel Foundations

2001 - Seventeen presentations made to Ottawa County service clubs and interested groups

2002 - Memorial envelopes distributed to Ottawa County funeral homes

2003 - Mailing lists established for Community Leaders and Professional Advisors; first newsletter mailed in July

2004 - First Scholarships and Community Grants awarded

2004 - Informational luncheon for selected potential donors, target letters mailed

2005 - Single largest gift of approximately \$500,000 in undesignated funds received from Dr. James and Priscilla C. Rhiehl

2006 - First OCCF / United Way joint workshop for grant seekers

2007 - OCCF Code of Regulations amended. Board member Conflict of Interest policy adopted

2008 - Charles Hablitzel and John Madison added to Board of Trustees

2009 - Started the year with 47 funds with a value of approximately \$2 million

Return Address:
Toledo Community Foundation
300 Madison Avenue, Suite 1300
Toledo, OH 43604-1151

NON-PROFIT ORG
U.S. POSTAGE
PAID
TOLEDO, OHIO
PERMIT NO. 300

Ottawa County Community Foundation, Inc. • PO Box 36 • Port Clinton, Ohio 43452-0036

BOARD OF TRUSTEES

Joy Roth, President - 419.797.4293
Dr. Derrill Hablitzel, VP - 419.732.3630
Julie Quayle, Sec'y - 419.797.4001
Neil Allen, Treas. - 419.798.5719
John Bock - 419.862.2505
Mary Coffee - 419.898.5571
Charles Hablitzel - 419.898.2244
Deborah Harmeyer - 419.855.8381
Jon James - 419.862.2688
Marcia Jess - 419.898.1799
John Madison - 419.732.3171
David Martin - 419.898.7242
Jack Schiller - 419.898.5571
David Slosser - 419.797.9726

THE BALANCING ACT

The Roles of a Community Foundation Simply put, a community foundation has three functions. It is a grant maker. It is a vehicle for the philanthropy of individuals, corporations and organizations that have concern for a specific geographic area. It provides leadership in the community it serves as an effective, independent arena for addressing difficult issues and/or advocating for needed programs, services or policies.

Grant Maker – Giving away money sounds like a lot of fun. The opportunity to provide financial resources to support local projects is one of the things that prospective board members find most appealing. However, grant making can often involve hard decisions.

Being an effective grant maker requires thorough knowledge of the community the foundation serves – including needs as well as opportunities. There is also a broad range of grant making interests. Arts and culture, community development, education, environment, health services, and human services are all common.

The main virtue of being a grant maker may be the process, not the product. Ordinary people, using resources generated by other ordinary people, make decisions about such resources.

Vehicle for Philanthropy – This capacity has positioned community foundations to serve as mechanisms for sustaining programs provided by nonprofit organizations. The flexibility of community foundations, their ability to accept almost any kind of gift and satisfy almost any donor interest as well as their careful stewardship of funds and their independent governance structures - all have contributed to the success of the community foundation movement.

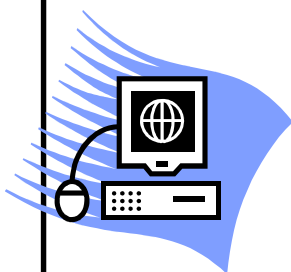
Leadership in the Community – Because of their experience working with a variety of donors, nonprofit organizations, grantees and units of government, community foundations' boards have special insights into community issues. A community leader can be defined as an individual or organization that identifies an issue, has a general sense of a desired outcome, and conducts a process that includes a broad range of community interests.

Community foundations can, and should, be non-self-serving, independent and advocates for the best possible outcomes for the communities they serve. Their leadership can be particularly important in situations that require a bridge between communities of affluence and communities of need. There are also situations where bridges between private and public interests must be built.

(Excerpts from monographs written by Dorothy Reynolds published by the Mott Foundation)

WEBSITE LAUNCHED

In January, the Ottawa County Community Foundation launched a new website to establish an ongoing presence for information access. The web presence will provide an effective way to inform potential grant seekers, community partners, supporters and the general public about the efforts of the Foundation. Visitors to the site will find information about the Foundation, current happenings, a list of our existing funds with a short summary of each fund, and how to apply for grant funding. Take a minute to check us out on the web at:



www.ottawaccf.org